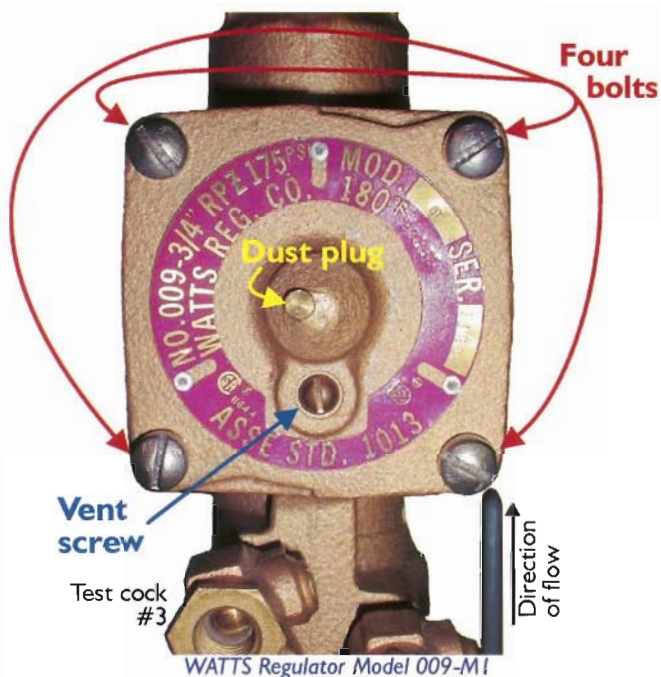


The Repair Guys

In our line of work, we field questions from contractors and technicians concerning repairs, installations, and general backflow prevention practices. We'd like to share some questions we receive and our answers. Everyone has different opinions on these subjects and we would like to hear yours. Contact us with your questions and ideas via email at: imark@backflowparts.com or mail us at American Backflow Products Co., P.O. Box 37025, Tallahassee, FL. 32315.

QUESTION —

I'm trying to find the correct repair parts for a 3/4 inch Watts model 009. I realize that there have been some changes to the model 009 series, and the parts for these do not interchange. This particular device is missing the identification tag. How can I find out which model of the 009 I have here?



Mark -

We get this question thrown to us a lot. The 3/4 through 2 inch model 009 series assemblies have been updated or modified several times over the years. These modifications are also dependent on the size of the assembly and are indicated on the data plate, *i.e.* M1, M2, M3. This can make finding the correct parts very interesting to say the least. If the data plate is unreadable or missing, you will have to rely on the physical features of the assembly to tell which device you have. In this article we will try to help you identify the 3/4 through 1 inch sizes of the model 009, and next month we'll discuss the 1-3/4 through 2 inch sizes of the model 009 assembly.

- Jason

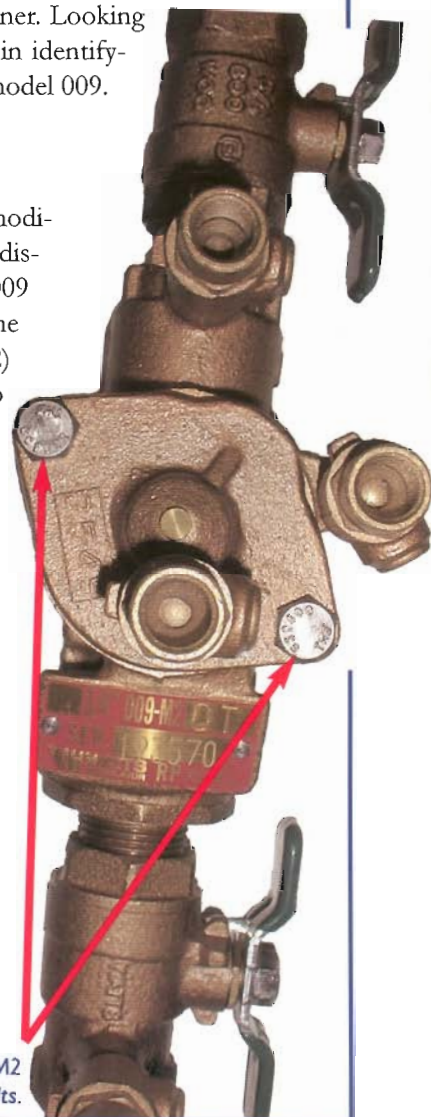
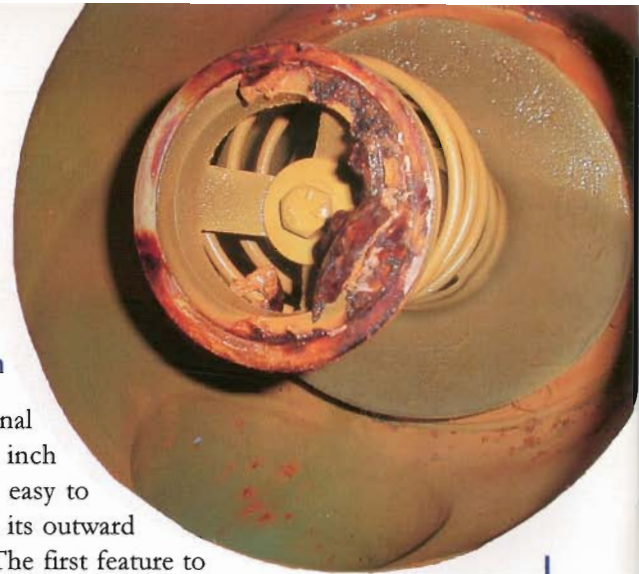
The original 3/4 and 1 inch model 009 is easy to identify from its outward appearance. The first feature to look for is the access cover. This cover has four (4) bolts. It also has a vent screw on the cover, and a dust plug in the center of the lid. The dust plug is round and resembles a wedge that is pushed down into the cover. This plug allows air to escape and at the same time keeps debris out. If you are still unsure about this model's identity, you can take the cover off and look at the relief valve stem assembly. The stem assembly is made of *brass*. Some of the early models also used a stainless steel retainer that was later changed to a black plastic retainer. Looking for these features should help in identifying the original 3/4 and 1 inch model 009.

Mark -

The 3/4 inch 009 was first modified to the 009M2. It is easy to distinguish this from the original 009 by its outward appearance. The 3/4 inch 009M2 has only two (2) cover bolts. The cover is also tapped for the number 2 test-cock, and has a dust plug in the center. The relief valve stem assembly is also plastic.

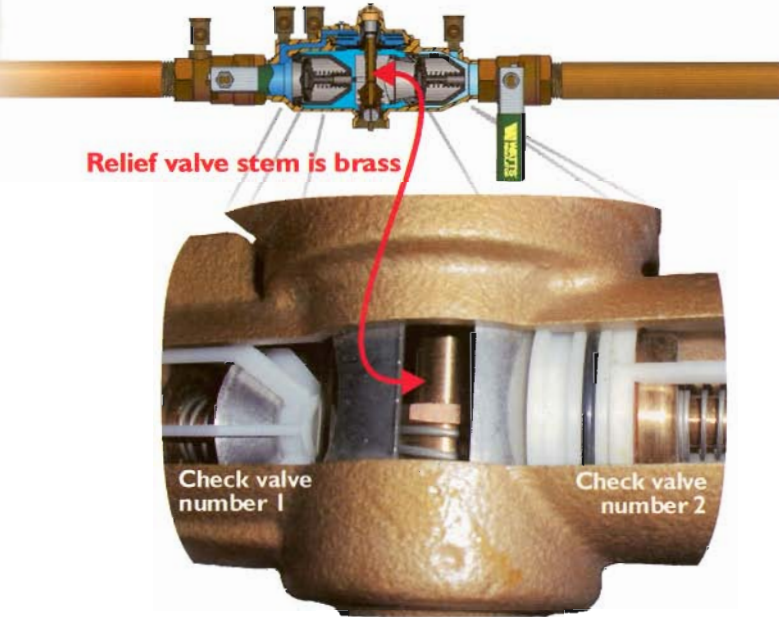
The 3/4 inch 009M2 was then modified to the 3/4 inch 009M3 but cannot be distinguished from the 009M2 from its outward appearance. The only difference between the 3/4 inch 009M2/M3 is the check valve modules. The 3/4 inch M2 uses a check module that resembles a barrel or canister that is white in color. And the 3/4 inch M3 uses a module that resembles a cage, which is black in color.

WATTS Regulator Model 009-M2
Cover has two bolts.

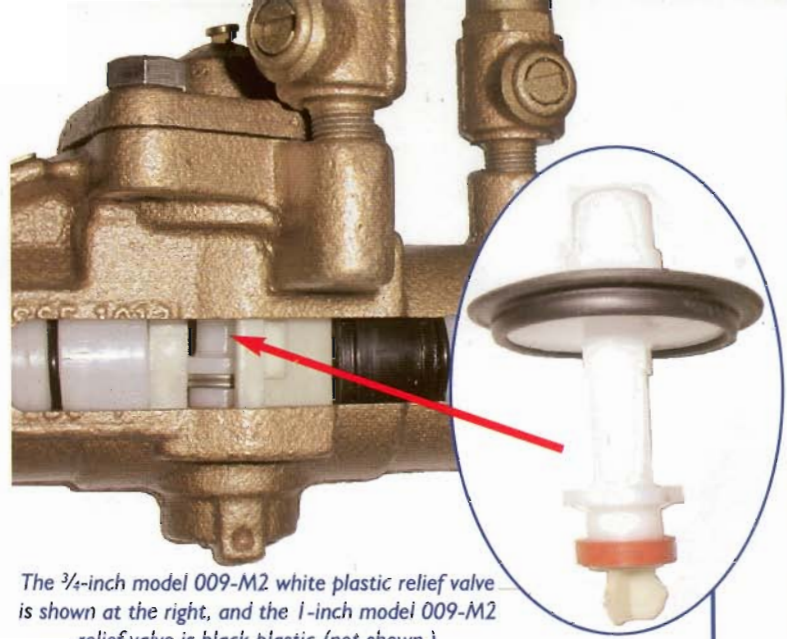




The left hand check valve #1 module is for a 009-M2 (barrel), and the right hand check valve #1 module is for a 009-M3 (cage.)



Watts Model 009



The 3/4-inch model 009-M2 white plastic relief valve is shown at the right, and the 1-inch model 009-M2 relief valve is black plastic (not shown.)

- Jason

The 1 inch model 009 has currently been modified to the 1 inch model 009M2. This device looks similar to the original 1 inch 009 being the same size, and also having (4) cover bolts. The difference between the two models is in the cover. The original 1 inch 009 has (4) bolts, a vent screw, and a *dust plug* in the cover, while the modified 1 inch 009M2 has (4) bolts, a vent screw, but *does not* have a dust plug in the cover. If you're still unsure you can take a look at the relief valve stem assembly. This one has a *black plastic* relief valve stem unlike the *brass* stem in the original 1 inch model 009. [dw&bp](#)



AMERICAN BACKFLOW PRODUCTS

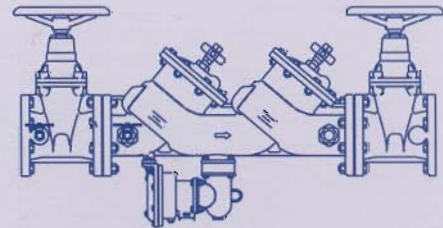
A DIVISION OF AMERICAN PUMP & SUPPLY

PARTS

(800) 575-9618

24 Hour Fax (850) 575-6508

Visit us at www.backflowparts.com.



Backflow Preventer

- Repair Kits
- Accessories
- Enclosures